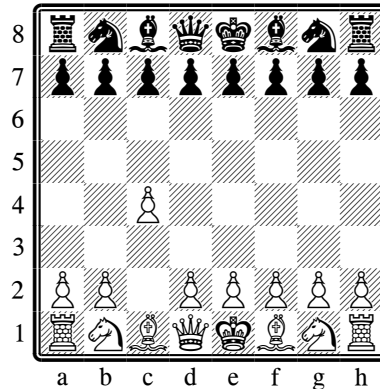


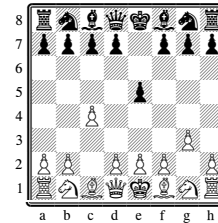
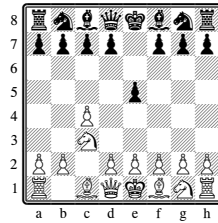
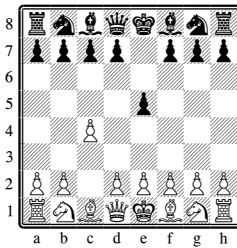
CHESS OPENING THEORY

The English Opening

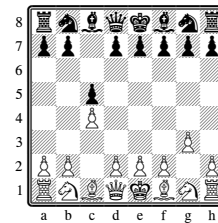
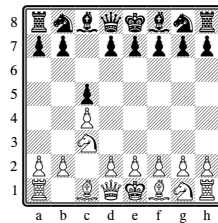
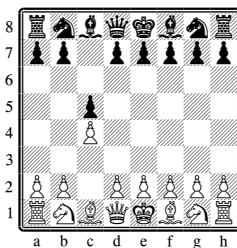


The English Opening, named after the great English chessplayer Howard Staunton, is an invitation by White to play a reverse Sicilian Defense, if Black grabs the center with e5. Black can instead play symmetrically with c5. If you look at the control the c4 pawn exerts on d5, you will see that the move naturally complements a kingside fianchetto. The English Opening has recently surged in popularity; in the recent Candidates Tournament, nearly a quarter of the games were English.

Black can play a Reverse Sicilian:



Black can play the Symmetrical English:



Black can play for an Indian Defense:

