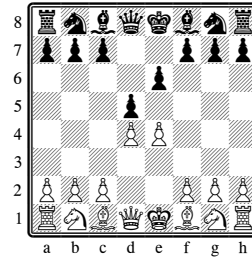
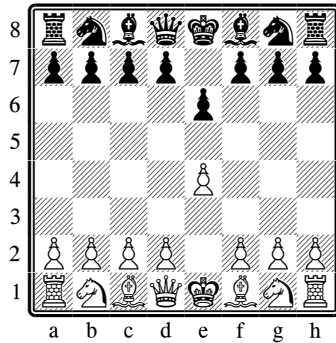


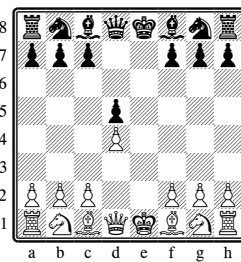
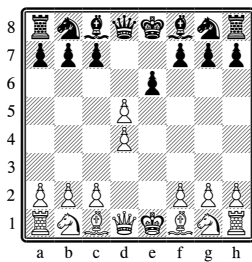
CHESS OPENING THEORY

The French Defense



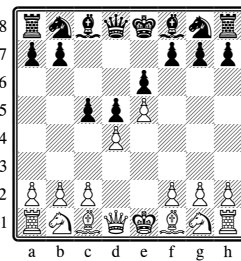
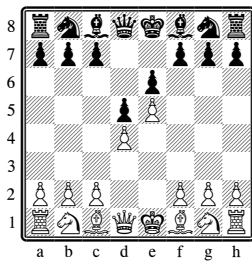
White plays for an open game, but Black aims to get his queen's pawn out to the center instead of his king's pawn. In this “semi-open” game, Black may have to play more defensively, but knows that his pawn structure is solid. As his second move, White seizes a “classical” pawn center, but then Black stakes his own claim with the queen's pawn.

The Exchange Variation attempts to open things up:



Black's only good option here is to recapture with the pawn.

The Advance Variation closes things:



Black's best move here is c5, immediately fighting for space.

The Classical Variation develops a knight while protecting the pawn:

