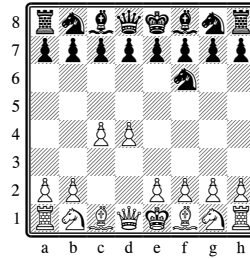
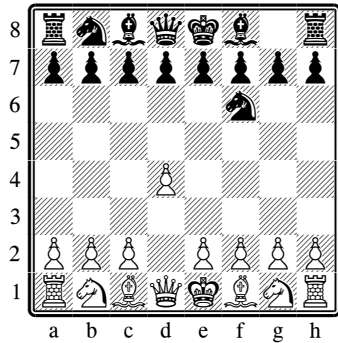


CHESS OPENING THEORY

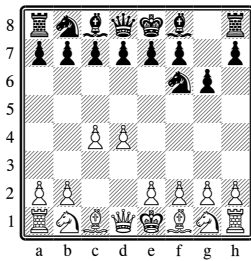
The Indian Defenses



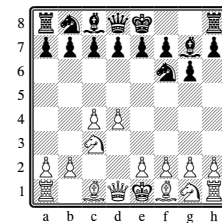
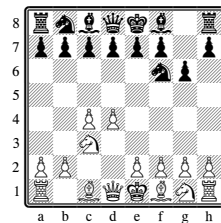
White could also play Nf3 and leave open the option to later play the "Anti-Indian" move c3.

White plays for a closed game, but Black sidesteps with the king's knight, avoiding the Queen's Gambit but still preventing White from playing e4 and seizing a classical pawn center. As her second move, White usually plays c4 to grab space and pressure the center.

Black plays a King's Indian Defense with a fianchetto of the king's bishop:

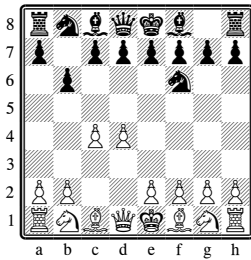


White develops the queen's knight.

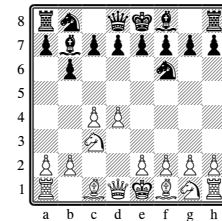
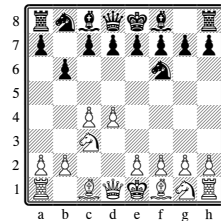


Then Black deploys the bishop along the diagonal. Instead, d5 here would shift to the Gruenfeld Defense.

Black plays a Queen's Indian Defense with a fianchetto of the queen's bishop:

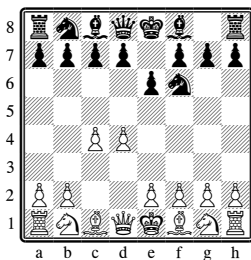


White develops the queen's knight.

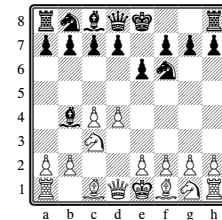
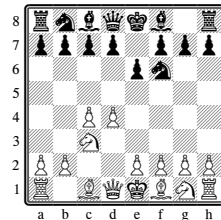


Then Black deploys the bishop along the diagonal.

Black plays flexibly with e6:



White develops the queen's knight. (Instead Nf3 avoids the Nimzo Indian.) (Or, g3 is the Catalan.)



Then Black plays the Nimzo Indian. (Other options are a Queen's Indian with b6 or QGD with d5.)