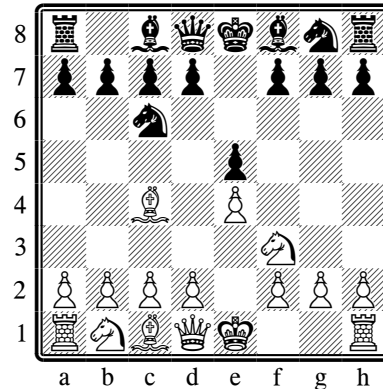


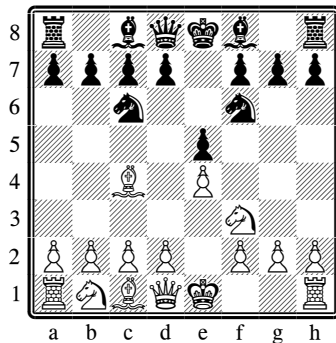
# CHESS OPENING THEORY

## The Italian Game

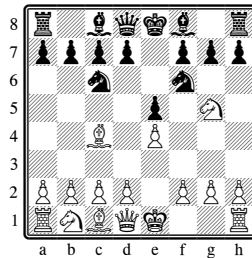


The Italian Game is one of the oldest, most respected openings and is still played at the highest levels. White sets the stage for a violent kingside attack, pointing at the weak f7 pawn, but with proper defense the game can go in many different directions with exciting play for both sides.

### The Two Knights Defense (A Gambit)

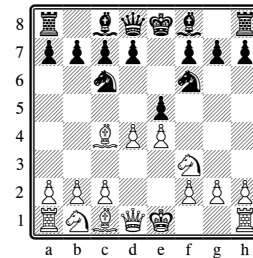


The Ng5 Attack wins a pawn, but Black gains tempi.



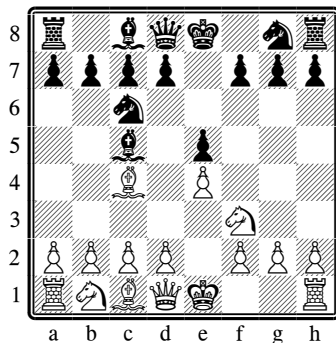
4 ... d5 5 exd5 Na5 6 Bb5+ c6 7 dxc6 bxc6

The move d4 is another aggressive choice for an attacking game:

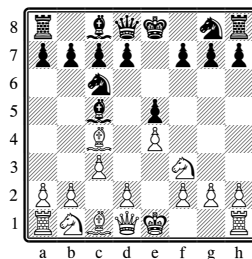


4 ... exd4 5 O-O

### The Giuoco Piano



In the main line, White plays c3 to prepare d4 and an attacking game:



Instead, d3 is the Giuoco Pianissimo.

The romantic Evans Gambit sacrifices a pawn for tempo:

