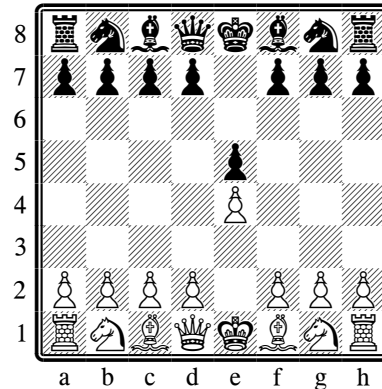


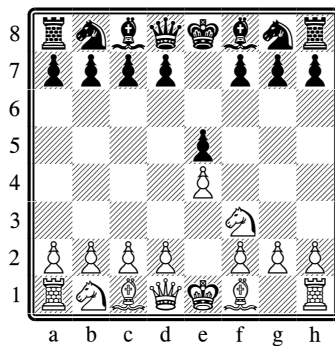
CHESS OPENING THEORY

The King's Pawn Game (The Open Game)

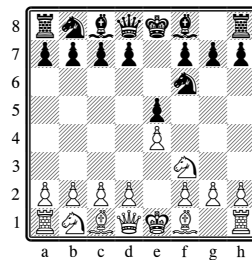


White seizes the center and Black responds in kind. The Open Game is a battleground for the courageous, often leading to crazy, complex positions where tactical shots and wild sacrifices abound.

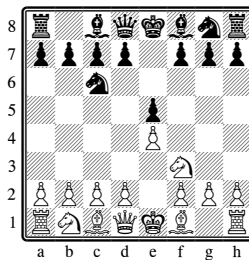
The King's Knight Opening (Nf3) develops a piece and attacks Black's pawn:



The Russian Defense (Nf6) develops and counter attacks:

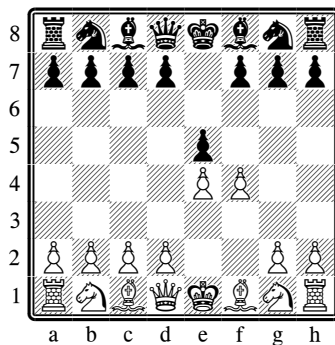


The Italian Defense (Nc6) develops and defends the pawn:

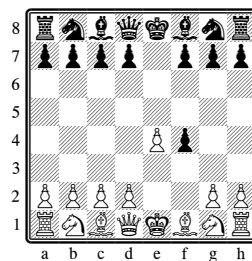


A third option, d6, is Philidor's Defense.

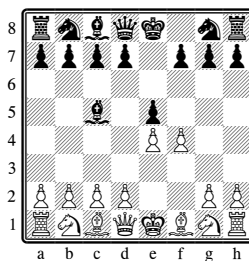
The dashing and gallant King's Gambit (f4) sacrifices a pawn to open lines of attack:



The King's Gambit Accepted (exf4) nobly accepts the challenge:



Declining the Gambit (say, with Bc5) veers toward safer fields:



The pawn at e5 is poison here!