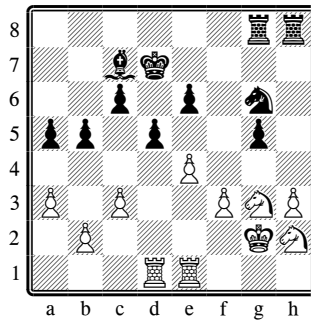
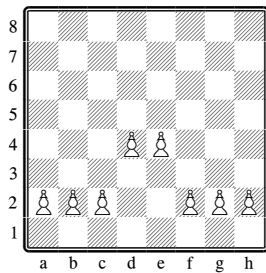


CHESS STRATEGY AND TACTICS

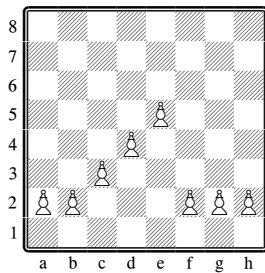
PAWN FORMATIONS



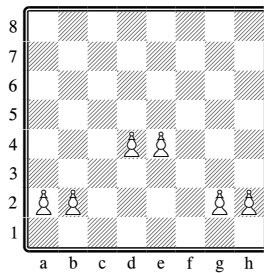
In 1749, Francois Philidor famously wrote that the pawns are the soul of chess. For years prior to Philidor, positional play and endgames were considered a bit dull, and a proper game of chess was one where both sides got pawns out of the way, opening the field for a great complex battle with the pieces, where brilliant sacrifices could then lead to checkmate. Philidor recognized the value of pawn play: since the pawns have less mobility than the pieces, their structure defines the terrain in which the battle takes place and gives rise to deeper strategies and more interesting ideas. *Philidor was playing Black in this game against Captain Smith in 1790, which continued 1...Nf4+ 2.Kh1 Rxh3 3.Rg1 Rxh2+ 4.Kxh2 Rh8+ 5.Nh5 Rxh5+ 6.Kg3 Nh3+ 7.Kg4 Rh4#.*



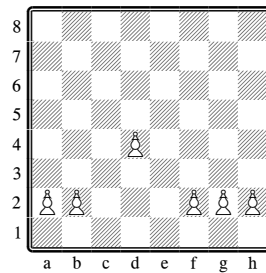
*Phalanx
(Connected Pawns)*



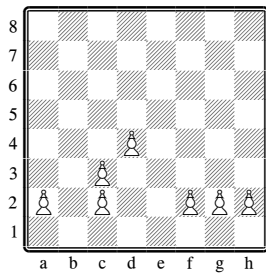
*Pawn Chain
(Advanced Pawn)*



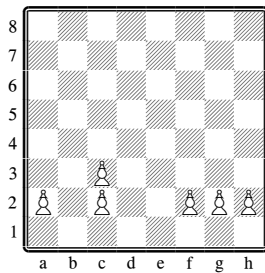
*Pawn Islands
(Hanging Pawns)*



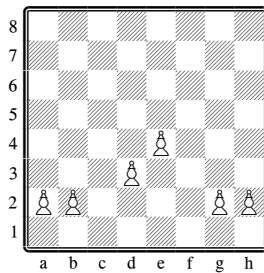
*Isolated Pawn
(Isolated Queen's Pawn)*



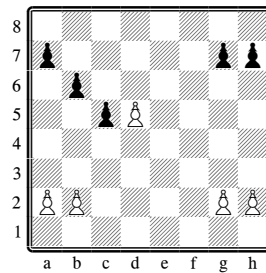
Doubled Pawns



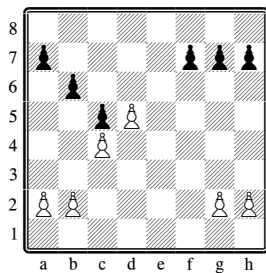
Doubled and Isolated



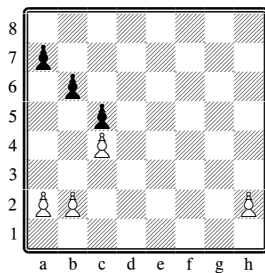
Backward Pawn



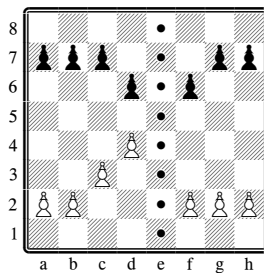
Passed Pawn



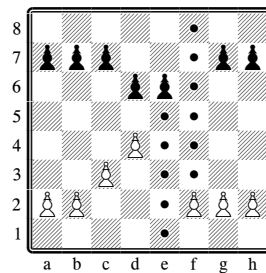
Protected Passed Pawn



Outside Passed Pawn



Open File



Semi Open File