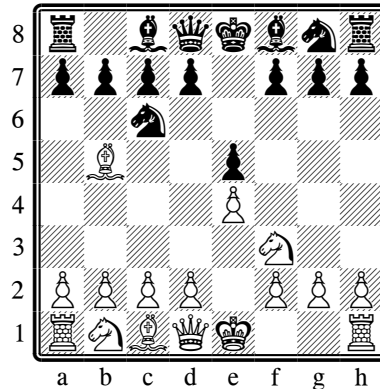


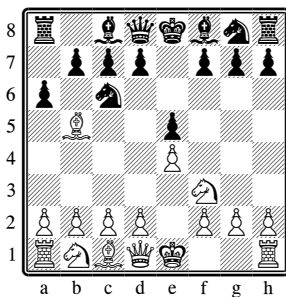
CHESS OPENING THEORY

The Spanish Game

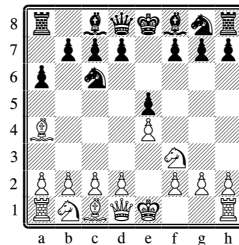


The move Bb5 gained notice in the 1500's as Ruy Lopez's recommendation against Nc6. With Leonardo di Bona's victory over Ruy Lopez and the long dominance of the Italians, the move Bb5 lay dormant for many years; now, though, the Spanish Game (or "Ruy Lopez") is the most respected of all open games. White attacks the knight that defends the pawn at e5, but more importantly: White is focusing on the center and the goal of establishing a central pawn phalanx, rather than simply attacking the f7 square.

Morphy's Defense, 3 ... a6

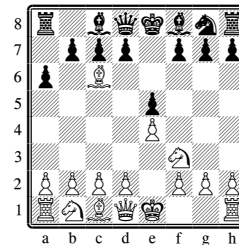


The Main Line



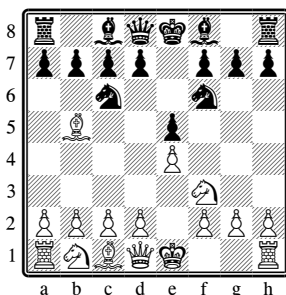
Black will play b5 at some point.

The Exchange Variation

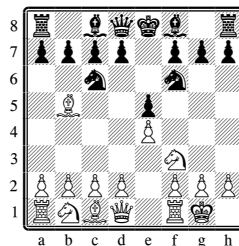


Black recaptures with the d pawn.

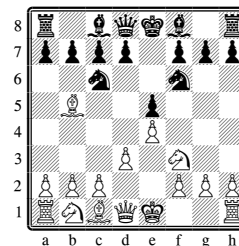
The Berlin Defense, 3 ... Nf6



White Castles



Steinitz's Move



Other Defenses

The Classical Defense: 3 ... Bc5 4. c3 (or 4. O-O)

Cozio's Defense: 3 ... Nge7 4. d4 (or 4. O-O, or 4. c3)

Bird's Defense: 3 ... Nd4 4. Nxd4 (or 4. Bc4)

Schliemann's Defense: 3 ... f5 4 Nc3 (or 4. d4, or 4. d3)

Old Steinitz Defense: 3 ... d6 4. d4 Bd7