

# CHESS OPENING THEORY

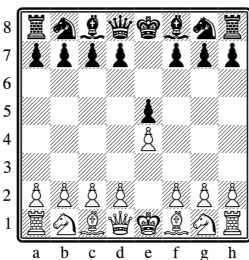
## Tournament Preparation



The most important thing to practice for a tournament is good sportsmanship. It is also nice to win games, and your preparation should include some basic plans for opening moves, thereby saving time and avoiding sudden disasters. These plans can form the basis of an opening repertoire that you build on as you gain experience, but at the least you should prepare what you will play as White against the most common defenses, and how you will defend as Black against the most common openings. With some sample lines as a guide, you will then be on steady footing as soon as you are *out of preparation*.

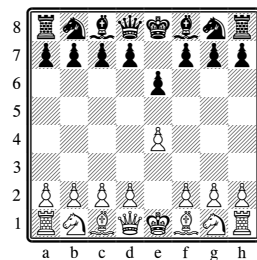
### A Plan As White: Play the King Pawn 1 e4

Against an Open Game



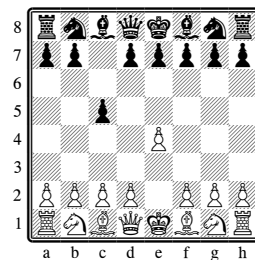
2 Nf3 Nc6 3 Bc4 **Bc5** 4 O-O  
 2 Nf3 Nc6 3 Bc4 **Nf6** 4 d3  
 2 Nf3 **Nf6** 3 Nxe5 d6 4 Nf3 Nxe5  
 5 Qe2 Qe7 6 d3 Nf6 7 Bg5  
 Qxe2+ 8 Bxe2

Against the French



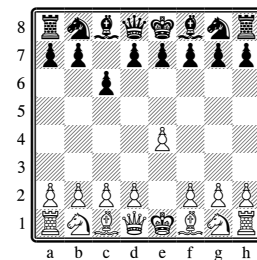
2 d4 d5 3 e5 c5 4 c3 Nc6 5 Nf3  
 Qb6 6 Be2 cxd4 7 cxd4

Against the Sicilian



2 Nf3 **e6** 3 d4 cxd4 4 Nxd4  
 2 Nf3 **Nc6** 3 d4 cxd4 4 Nxd4  
 2 Nf3 **d6** 3 d4 cxd4 4 Nxd4

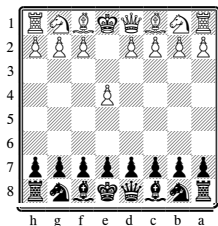
Against the Caro-Kann



2 d4 d5 3 Nc3 dxe4 4 Nxe4 Bf5 5  
 Ng3

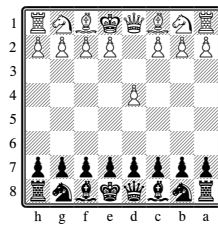
### A Plan As Black: Play Symmetrical Defenses

Against King Pawn 1 e4



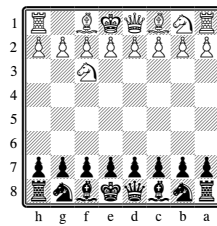
1 ... e5 2.Nf3 Nc6 3 **Bc4** Bc5  
 1 ... e5 2.Nf3 Nc6 3 **Bb4** Bc5  
 1 ... e5 2 Nf3 Nc6 3 **d4** exd4 4  
 Nxd4 Bc5  
 1 ... e5 2 **f4** Bc5  
 1 ... e5 2 **Bc4** Bc5 3 Qh5?! Qe7

Against Queen Pawn 1 d4



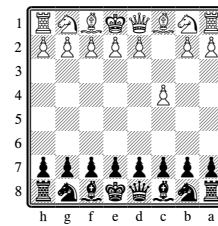
1 ... d5 2 c4 c6

Against 1 Nf3



1 ... Nf6 2 **d4** d5 3 c4 c6  
 1 ... Nf6 2 **g3** g6 3 Bb2 Bg7

Against English 1 c4



1 ... c5 2 Nf3 Nf6 3 Ne3 Nc6 4  
 d4 cxd4 5 Nxd4 e6